

A neon sign is mounted on a dark brick wall. The sign features the word "LAW" in large, stylized letters. The letter "L" is made of blue neon, the "A" is made of orange neon, and the "W" is made of blue neon. Below the letters, the word "GAMES" is written in a bold, white, sans-serif font with a slight shadow effect. The entire sign is illuminated, casting a soft glow on the surrounding bricks.

LAW
GAMES

Unattended
VIRTUAL REALITY
that's delivering

**BIG
RESULTS**

**Virtual
Rabbids**
THE BIG RIDE



VIRTUAL RABBIDS: THE BIG RIDE

The world leading VR attraction for entertainment venues, The Big Ride is providing operators a great return on their investment. It features premium HTC VIVE headsets, accurate motion base by D-BOX and dynamic wind simulation. Each seat is monetized for maximum revenue potential, and the unique audience-facing cabinet generates crowds and builds anticipation. The Big Ride delivers on earnings and provides a rewarding experience for guests of all ages. Ask your distributor for the latest revenue results!

Width: 60" / 152cm
Depth: 126" / 319cm

Height: 136" / 346cm
Weight: 1,444lbs / 655kg



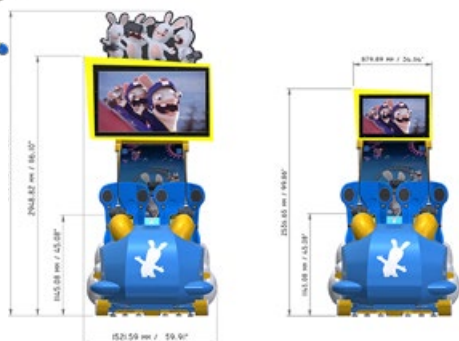
THE INDUSTRY'S FIRST ATTENDANT-FREE VR ATTRACTION.

Developed from the ground up by LAI Games to operate like any other coin-op amusement game, The Big Ride was created in partnership with leading game developer Ubisoft. The attractive and practical cabinet design reflects LAI Games' time-honored experience in arcade game design, with a high quality and exciting all-ages VR experience that provides entertainment for both first time users and experienced enthusiasts.

- 55" overhead display shows the rider's view
- Security cabling on headsets
- Integrated self-service mask dispenser
- Independant wind jets
- Commercial grade computers and hardware
- Each rider pays to play

Same BIG thrills. Smaller format.

The compact cabinet fits in more locations, delivering the same gameplay experience as the original. A great option for locations where height is limited.



Ships with 3 Exciting Experiences!

The Big Ride ships with 3 exciting experiences that operators can turn on or off, allowing them to rotate content and keep the ride fresh for guests! Our free digital marketing kit also helps you promote The Big Ride in store and online!

Alpine Adventure



Canyon Chaos



Holiday Hijinks



NEW! THE BIG RIDE JUST GOT BIGGER!

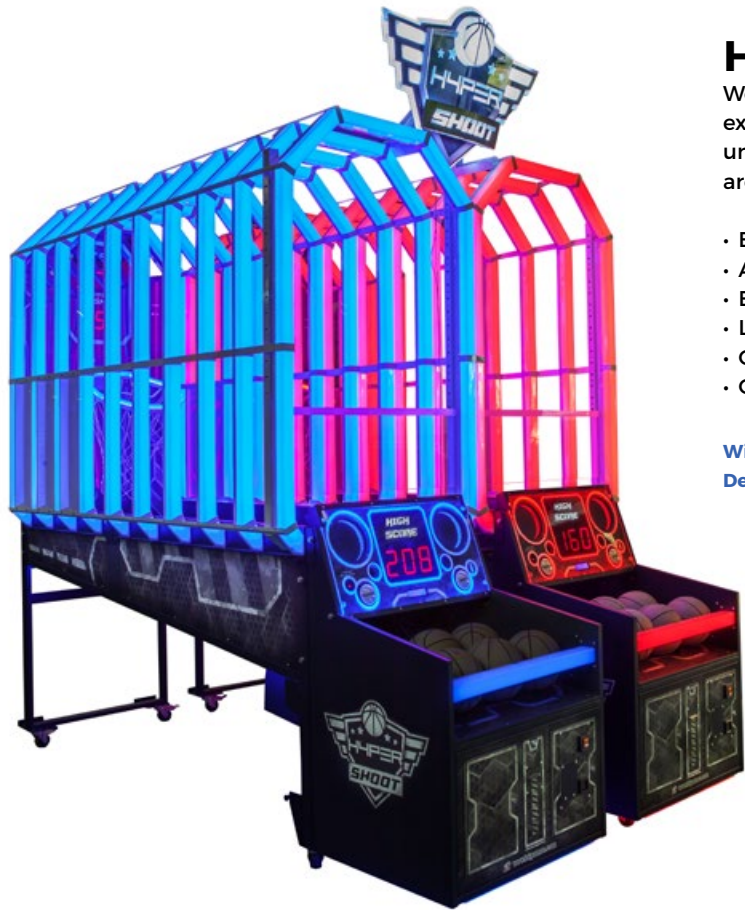
3 New Experiences Coming in 2019!

Virtual Rabbids: The Big Ride will add 3 new experiences to its lineup in 2019, making it even more flexible for operators to keep the game at top earning capacity. You can also expect more great marketing materials and support from the LAI Games team!



Don't miss important news & updates!

Make sure you're receiving our newsletter to stay on top of important LAI Games news! Each month The Insider is packed full of operating tips, free event passes and more! Scan the QR code or visit laigames.com/insider



HYPERSHOOT

We've reinvented arcade basketball to offer an innovative and rewarding game experience that guests just can't seem to walk past. The interactive light tunnel, unique hoop and real time sports commentary really add that WOW to your arcade collection. HYPERshoot can be linked for up to 8 player competition.

- Brilliant interactive light tunnel and real time sports commentary
- As a pair its unique gameplay is right at home in your midway
- Extra points for scoring in quick succession
- Linked game play for multi-player competition
- Optional "Bonus Tickets" for linked game play
- Optional overhead sign

Width: 43.07" / 109.4cm

Height: 113.39" / 288.0cm

Depth: 122.05" / 310.0cm

Weight: 882lbs / 400kg



Unit Connector Covers and Side Skirts now available.
Contact our sales team for more information.

“Let’s Bounce is a great all-ages game - it’s very addictive because people think they can keep doing better each round, so it has a ton of repeat play. It’s in the mix for our new Bowlero game rooms.”

Steve Veach, Director of Amusements, Bowlero Corp.



LET'S BOUNCE

It's the instant classic in your Midway. Attractive and addictive game play that's great for all ages. The competition and suspense that the game brings are a huge hit with guests as they race against the clock to hit the last few remaining tiles! It's not uncommon to see a crowd gather around during head to head action. Easy to play but challenging to master.

- Attractive cabinet and dazzling lighting effects lure players
- Unique game play with interactive, illuminated tiles that players target
- Bonus and jackpot rounds have special effects that add great theatre to the game play
- Optional overhead sign

Width: 48.03" / 122.0cm
Depth: 122.05" / 310.0cm

Height: 103.94" / 264.0cm
Weight: 904lbs / 410kg



SNAPSHOT 2

For 1-3 players, Snapshot 2 Standard offers dual cameras for normal and selfie shots, with unique filters, decorations and frames.

- Designed for 1-3 players
- Commercial quality Mitsubishi Dye-sub printer
- 600 vendes per roll
- No media tie-in: buy your photo paper anywhere you choose
- Photo print size: 4" x 6"
- Automatic software updates

Width: 40.1" / 101.9cm

Height: 78.6" / 199.8cm

Depth: 53.9" / 137cm

Weight: 540.1lbs / 245kg



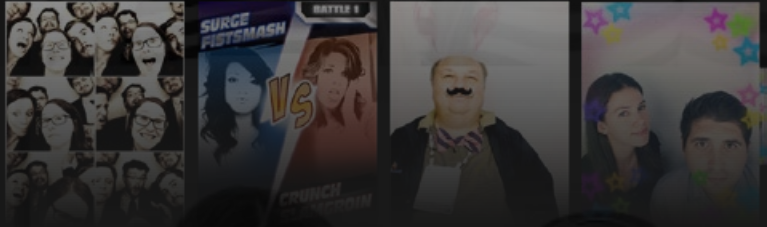
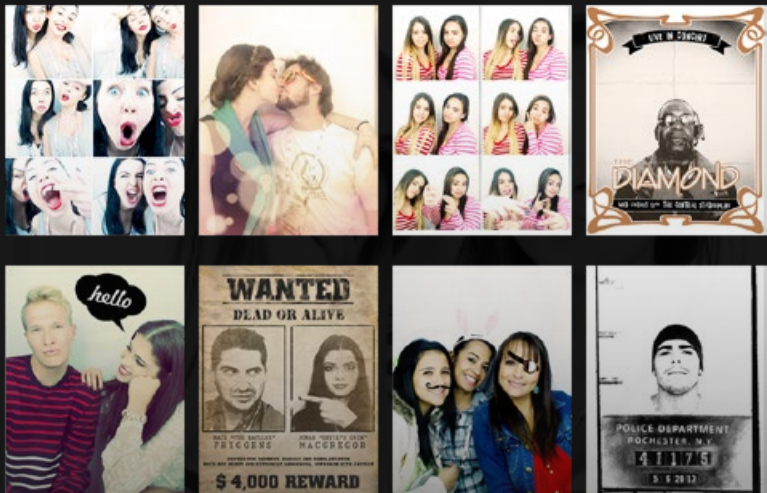
BREAK FREE

FROM HIGH PHOTO BOOTH MEDIA COSTS
WITH



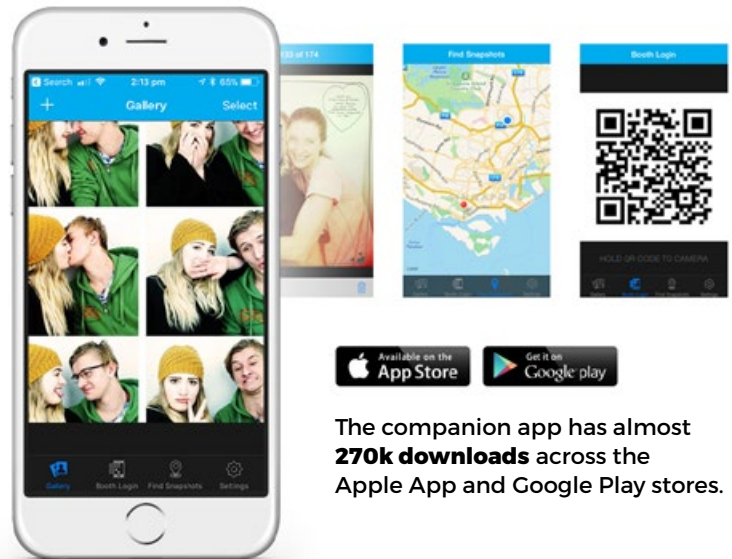
- ✓ Restock your photo paper from any supplier!
- ✓ Bigger profits! Get your vend costs from \$0.16!
- ✓ FREE companion app to drive social interaction!





“Snapshot 2 is a stellar piece. Our guests vote with their dollars, and they’re voting for this photo booth more than any other. Cost per vend was one of our leading purchasing factors, it’s on track to pay for itself in 14 weeks.”

Mike Abecassis, CEO, GameTime



The companion app has almost **270k downloads** across the Apple App and Google Play stores.

FREE COMPANION APP

With the Snapshot mobile app, players can transfer photos between the booth and their smart phones, allowing for easy sharing on social media. Snapshot also has a feature no other booth can offer - guests can print their own photos from their phone!

COMPANION APP FEATURES:

- ✓ Print & decorate your own photos from phone
- ✓ Share new photos on any social network
- ✓ Photos automatically synced with your phone
- ✓ Find the nearest Snapshot on Google Maps



COLOR MATCH

An attractive, retro-themed prize merchandiser, Color Match packs big fun and seven Major Prize lockers into a compact footprint.

- Match the colors of on-screen rotating disk through multiple levels
- Easy to play but hard to master, encouraging repeat play
- Capsule, ticket or spiral vend minor prize options
- 7 Major Prize window lockers

Width: 46" / 117cm
Depth: 25.3" / 64.3cm

Height: 89.4" / 227cm
Weight: 550lbs / 249.5kg

MEGA COLOR MATCH LITE

With its massive presence and retro styling, Mega Color Match Lite attracts players to match the colors on the on-screen rotating disk and win BIG tickets.

- Match the colors of on-screen rotating disk through multiple levels
- Easy to play but hard to master, encouraging repeat play
- Capsule or ticket minor prize options
- 3 ticket dispensers for fast Minor Prize payout

Width: 90" / 228.5cm
Depth: 87.1" / 221.3cm

Height: 119.8" / 304.4cm
Weight: 1131lbs / 513kg





“Prize Box is a high revenue generating game at a surprising bargain price. They’re perfect for when you don’t want to block the view through a room.”

Rich Pankey, VP of Games, Family Entertainment Group

“Prize Box is killing it for us! It is doing phenomenally. We’re going to put them in all our stores.”

Shawn Hetzel, Arcade Manager, Frankies Fun Park



PRIZE BOX

A modern take on the crane, providing players with a unique bird's eye view of the action. The small footprint, attractive LED lighting and all-around glass top and sides make this a “clear” winner.

- Compact size fills a space not many games can
- Players love how they can get closer to the action
- Create an attraction by banking multiple units together
- Attractive LED lighting

Width: 33.6" / 85.3cm

Height: 35.7" / 90.8cm

Depth: 33.5" / 85cm

Weight: 315lbs / 143kg



SPEED OF LIGHT

Speed of Light is a perennial crowd-pleaser with a large player following and remains a top pick for any entertainment venue. Competitive and active game play is a hit with players. Hit as many randomly illuminated buttons as possible within time limit.

- Head to head game play in 2 player mode
- Bonus points awarded for superior speed and accuracy
- Tickets or amusement-only settings

Width: 74" / 187cm

Height: 93" / 237cm

Depth: 65" / 164cm

Weight: 529lbs / 240kg



THE MUST-HAVE GAME FOR ANY VENUE

Rated the #1 game in the U.S. by RePlay Magazine Players' Choice Poll in 2012, the popularity of Speed of Light has grown considerably since then, generating thousands of player-posted Youtube videos marking their high scores and challenging their friends.

Celebrities like Justin Bieber and soccer super star Neymar Jr. have even been seen playing Speed of Light. Their head-to-head challenge on Instagram racked up millions of views in just days.

“Speed of Light is a stunner. It thrills players and has tremendous spectator value. Another quality offering from LAI Games.”

**George McAuliffe, President
Pinnacle Entertainment Advisors**

“Speed of Light is a winner. It looks great, is liked by all, and has a great ROI. Plus, it’s a great way to work out!”

**John LeGuen, Former Director of Amusements
Main Event Entertainment**



MEGA STACKER

The super-sized version of the smash hit classic Stacker. At over 8 feet wide and nearly 10 feet tall it's a prize merchandiser your guests won't be able to walk past without giving it a try.

- Skillfully stack the blocks to win
- 5 Major Prize window lockers
- Tickets or capsule dispenser Minor Prize options

Width: 99" / 251cm

Depth: 70" / 177cm

Height: 115" / 293cm

Weight: 1080lbs / 490kg

MEGA STACKER LITE

Mega-sized, tickets-only version of the smash hit classic, Stacker.

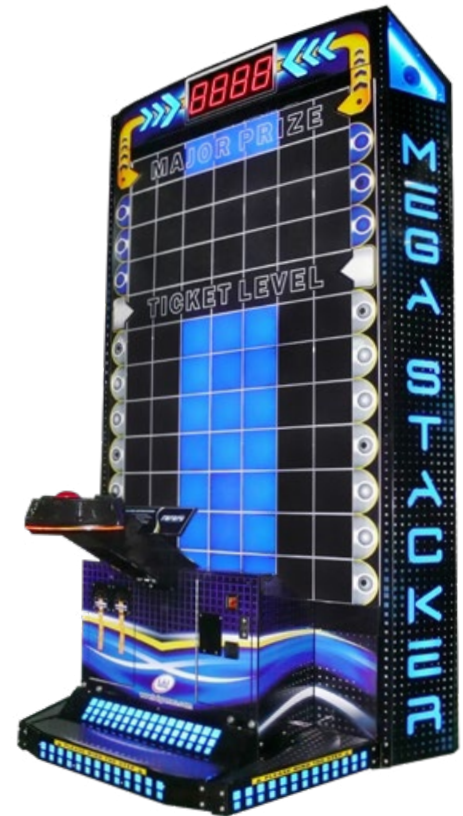
- Skillfully stack the blocks to win tickets
- 2 ticket dispensers for fast payout
- Capsule dispenser (optional install)

Width: 67" / 169.6cm

Depth: 50" / 127.5cm

Height: 109" / 277cm

Weight: 661lbs / 300kg



SHOOTING MANIA

An entertaining carnival-style video shooting gallery game for the whole family. Up to three players can join in and work together or steal points from their opponents. Adjustable settings allow operators easy management of ticket payout for regular winners and maximum income.

- Shoot to break the ribbons and rope holding up the valuable targets
- Finish off what other players started to steal big ticket wins
- Multi player fun for all ages

Width: 58" / 147.4cm

Height: 77.8" / 197.8cm

Depth: 38.8" / 98.5cm

Weight: 353lbs / 160kg



BALLOON BUSTER

A hit with players, this prize merchandiser recreates a fun and nostalgic carnival atmosphere with its with highly themed style, visuals and audio. Simple, quick gameplay encourages repeat attempts.

- Skillfully guide a metal dart to pop the balloon and win the prize
- 100% Skill option
- Mercy ticket dispensing (optional)
- Global or individual prize adjustment settings

Width: 37" / 93cm

Height: 86" / 219cm

Depth: 34" / 87cm

Weight: 452lbs / 205kg

PIÑATA

Just like the party staple, players use a wooden bat to hit a drum and try to break the onscreen piñata, which responds believably to the hits.

- Players hit the drum to smash the Piñata
- Drum sensors react to direction and strength of each hit
- Mercy ticket option
- 4 levels with 28 unique piñatas

Width: 50" / 127cm

Height: 82" / 208.3cm

Depth: 46.4" / 118cm

Weight: 353lbs / 160kg



HIGH FIVE

An energetic, side-by-side competitive redemption game for kids. High Five is modeled after our wildly successful Speed of Light. Oversized buttons randomly light up for players to "high-five" them.

- Kids love the competitive and physical game play.
- Single or double player with individual tickets awarded
- 3-second bonus round where all buttons are illuminated
- Eye-popping lights and lively sound effects

Width: 61.3" / 155.7cm

Height: 73.19" / 185.9cm

Depth: 23" / 58.3cm

Weight: 286lbs / 130kg



PIRATE BATTLE, PRINCESS CASTLE & CHOO CHOO TRAIN

Attractive themed ball toss redemption offering with vibrant light effects and themed voice announcers. Creates an appealing junior challenge wall when paired side-by-side or all 3 banked together.

- Toss lightweight balls into illuminated compartments
- Popular children's themes
- Double points during end-of-game frenzy
- Tickets, coupons or amusement-only settings

Heights

Pirate Battle: 110" / 280cm

Princess Castle: 102.7" / 261cm

Choo Choo Train: 84.5" / 214.8cm

Width: 35" / 90cm

Depth: 73" / 185cm

Weight: 452lbs / 205kg

A KID'S CORNER IN YOUR FEC HELPS YOUR BOTTOM LINE IN MORE WAYS THAN ONE!

Improve business by considering the needs of the youngest guests in your FEC. A simple, cost effective children's game area will lead to greater customer retention, higher levels of customer satisfaction and greater customer loyalty.

Some of our other popular games that work great alongside our ball toss games are Shooting Mania (page 11) and High Five or Piñata (page 12).

A DEEP HISTORY IN THE GAME INDUSTRY

LAI Games is a leading developer and manufacturer of arcade games, prize & crane games, skill-based redemption games, ticket redemption games, photo booths, and novelty games. With roots that reach back to 1958, we have decades of experience working across international markets and a reputation for integrity. We design unique, rewarding experiences for players, built with operators' needs in mind.

5 REASONS TO VISIT LAIGAMES.COM

- 1 See detailed game features and specs for all current LAI products.
- 2 Watch feature videos of all our games in action.
- 3 See photos of our games on-location along with player-created media.
- 4 Connect with us on social media and sign up for our newsletter for industry event coverage, news and operating tips.
- 5 See our tradeshow schedule, access distributor information and take advantage of free passes to industry events.

GAME	COIN MECH CHASSIS ONLY	UCL	STANDARD † CM INTERFACE	COIN COMPARATOR	BILL ACCEPTOR COMPATIBILITY	UP/DOWN STACKING	BILL ACCEPTOR STACKER MAX CAPACITY
Virtual Rabbids	•	•	•		MARS AE 2600*	UP	1000
HYPERshoot	•	•	•		MARS AE 2600*	UP	1000
Let's Bounce	•	•	•		MARS AE 2600*	UP	1000
Balloon Buster	•	•	•		MARS AE 2600*	UP	1000
Speed Of Light	•	•	•		MARS AE 2600*	UP	700
Snapshot 2	•	•	•		MARS AE 2600*	UP	1000
Color Match	•	•	•		MARS AE 2600*	UP	1000
Mega Stacker	•	•	•		MARS AE 2600*	UP	1000
Prize Box				•	MEI AE2484D5E	DOWN	500
Pirate Battle	•		•		--	--	--
Princess Castle	•		•		--	--	--
Choo Choo Train	•		•		--	--	--
Piñata	•	•	•		MARS AE 2600*	UP	700
High Five	•	•	•		MARS AE 2600*	UP	1000
Shooting Mania	•				--	--	--

* Standard DBA interface plugs into the 115VAC Mars AE2600 series single low level pulse interface DBA with 25007706 harness option.

† Standard Coin Mech interface: A mechanical holder and micro switch triggered by the coin hitting it.
 • IDC10 connector for NRI C.13 Validator • 2 x JST XH6 for Sangin SG-968 acceptor



SALES

North and South America
Chris Brady: +1 469-541-0555

UK, Europe, Middle East & Asia Pacific
Steve Bryant: +44 7774-653-500

SUPPORT

+1 469-521-7000
support@laigames.com



laigames.com



LAI Games is a Helix Leisure company